

# Hampshire Water Transfer and Water Recycling Project Environmental Statement - Figure 13.21 Zone of Theoretical Visibility - operation with screening – Proposed Development differentiating Above Ground Plants

VOLUME NUMBER: 6

PLANNING INSPECTORATE SCHEME NUMBER: WA010002

APPLICATION DOCUMENT REFERENCE: 6.3

APFP REGULATION: 5(2)(a)

May 2026

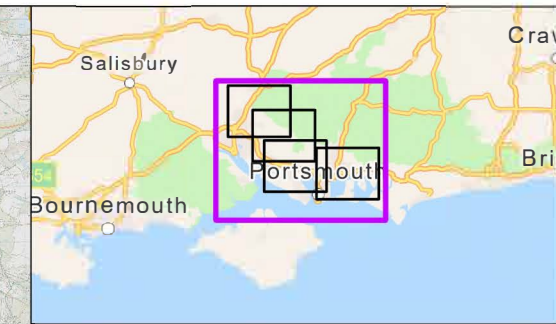
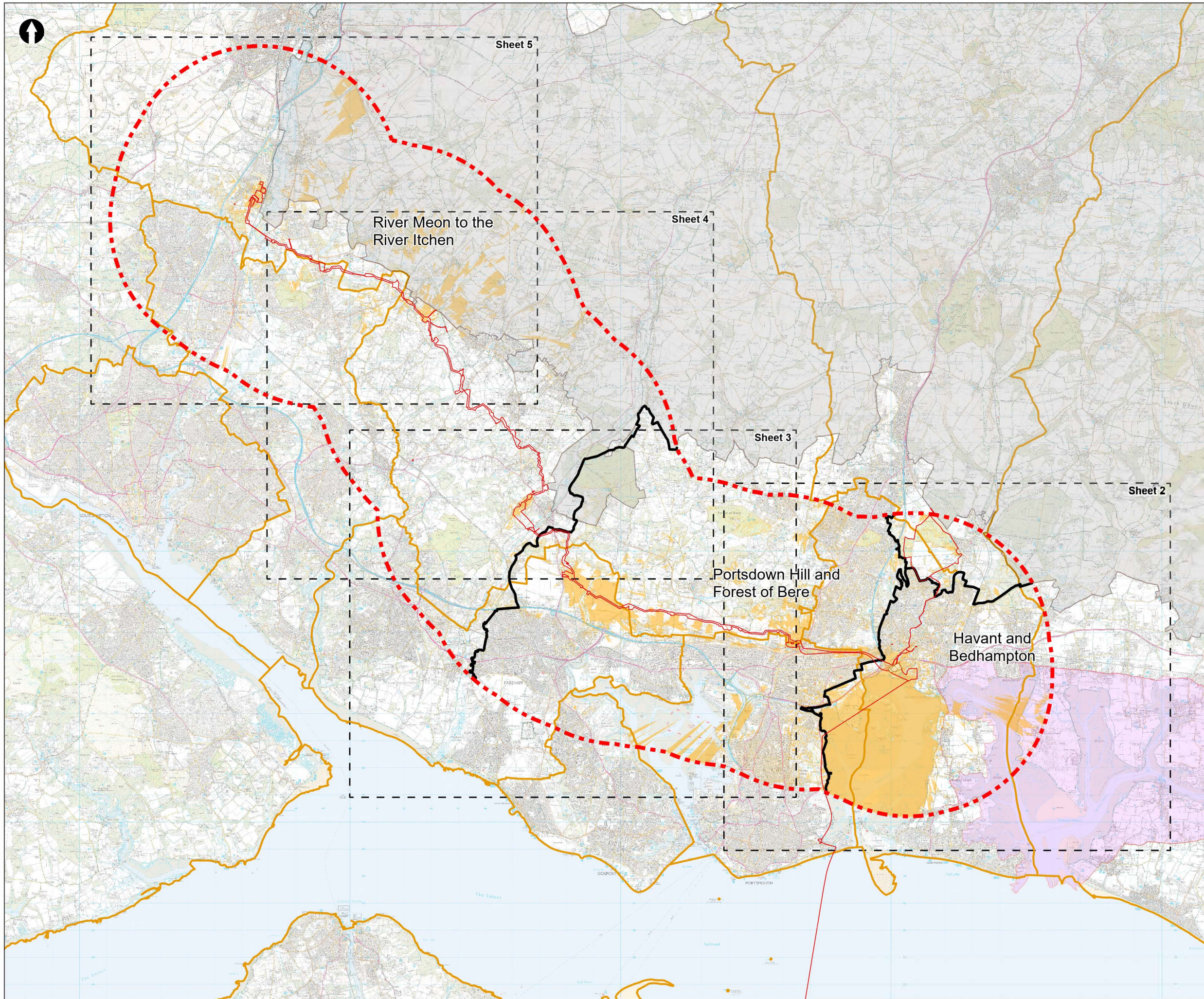
Version 0



from  
**Southern  
Water** 

The Southern Water logo consists of the words 'Southern' and 'Water' stacked vertically in a dark blue, sans-serif font. To the right of the word 'Water' is a graphic element consisting of three stylized, wavy lines in shades of blue, representing water.





- Order Limits
- Visual Study Area (5km)
- Principal sections within the study area
- Sheet extent boxes 1:50k
- Local planning authorities
- Water Recycling Plant Site
- South Downs National Park
- Chichester Harbour National Landscape
- Zone of Theoretical Visibility: Operation with screening

ZTV = Zone of Theoretical Visibility.  
 DSM = Digital Surface Model.

ZTV produced with Lidar DSM.  
 ZTV shows visibility, with screening, of permanent above ground structures only.  
 Relative Heights:  
 Budds Farm WTW pumping station: 3.5m height.  
 Water recycling plant: 14.5m height.  
 Brake pressure tanks (BPT K): 3.5m height.  
 Intermediate pumping stations (IPS F, BPT/IPS E, IPS G): 8m height.  
 Limits of Deviation for Otterbourne INNS Treatment Plant: 8m height.  
 ZTV based on absolute heights (AOD) of permanent structures and proposed landform changes.

Coordinate system: British National Grid; Datum: OSGB 1936  
 Data sources: © Crown copyright and database rights 2026 Ordnance Survey 0100031673. Sources: Esri, TomTom, Garmin, FAO, NOAA, USGS, © OpenStreetMap contributors, and the GIS User Community © Environment Agency copyright and/or database right 2026. All rights reserved.

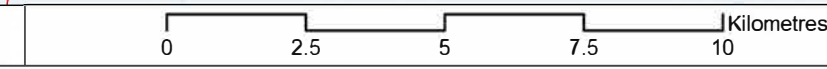
PROJECT TITLE  
 Hampshire Water Transfer and Water Recycling Project

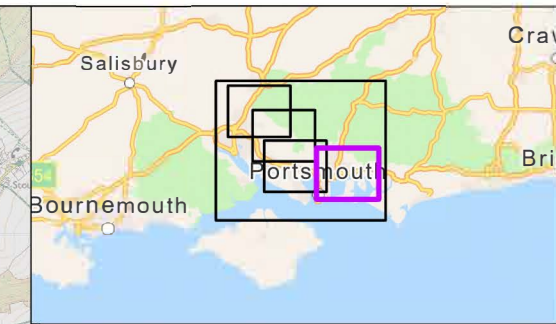
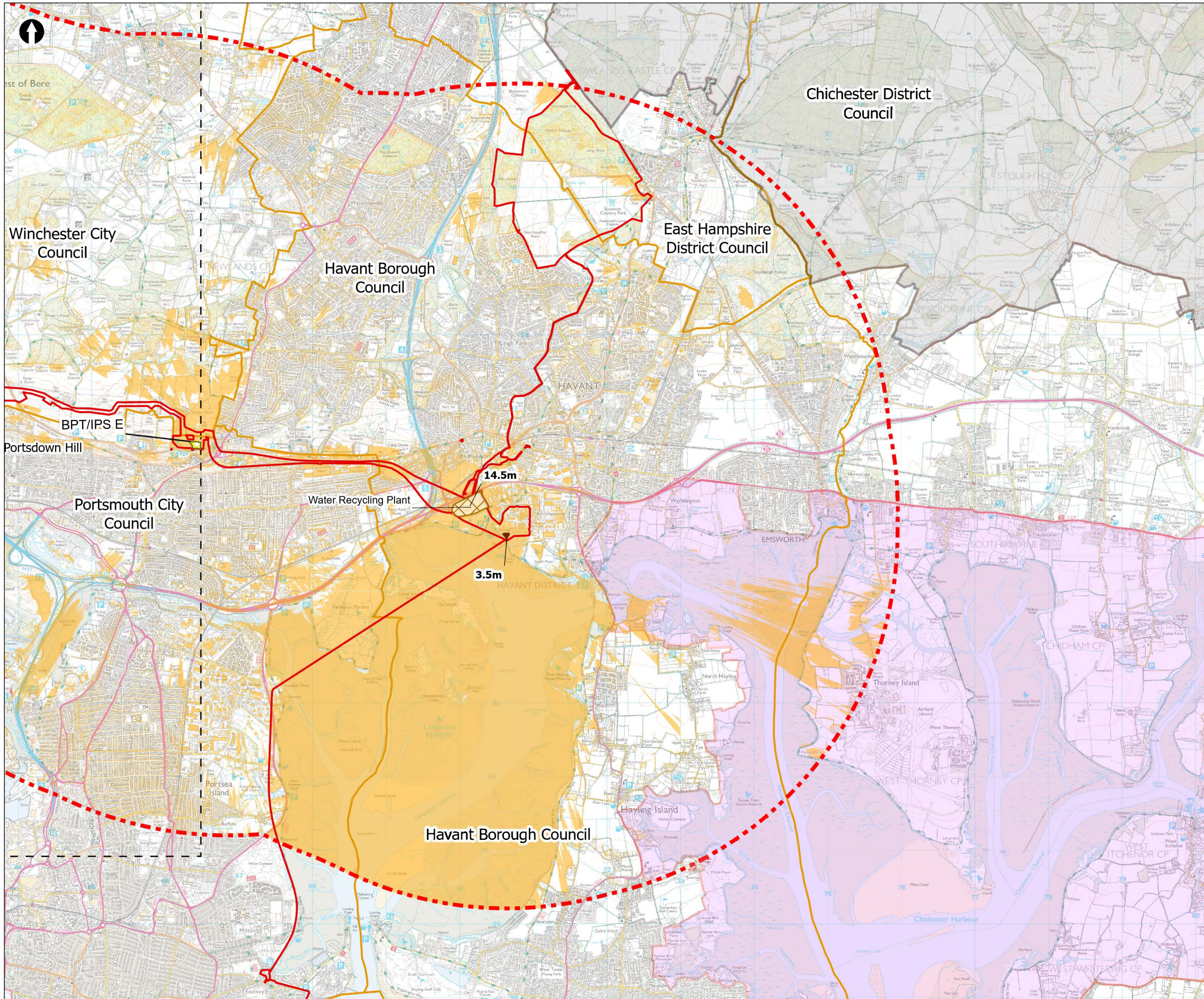


Figure 13.21  
 Zone of Theoretical Visibility (operation, with screening – Proposed Development differentiating Above Ground Plants)  
 Sheet 1 of 5

Drawn <b>DL</b>	GIS Checked <b>MW</b>	Checked <b>MP</b>	Approved <b>AK</b>
Scale at A3 <b>1:136,000</b>	Status <b>Final</b>	Revision <b>05</b>	Security <b>STD</b>

Drawing Number  
**PC5223-RHD-ES-ZZ-D-Z-0155**





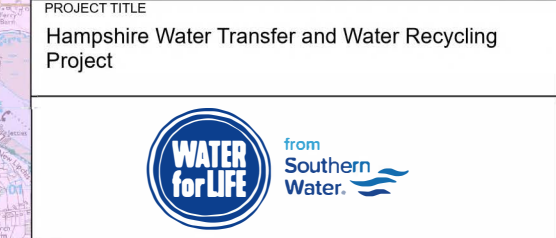
- Order Limits
- Visual Study Area (5km)
- Sheet extent boxes 1:50k
- Local planning authorities
- Limits of Deviation for Budds Farm Pumping Station
- Water Recycling Plant Site
- South Downs National Park
- Chichester Harbour National Landscape
- Zone of Theoretical Visibility: Operation with screening
- Above Ground Plant**
- Break Pressure Tank & Intermediate Pumping Station

ZTV = Zone of Theoretical Visibility.  
 DSM = Digital Surface Model.

ZTV produced with Lidar DSM.  
 ZTV shows visibility, with screening of permanent above ground structures only.  
 Relative Heights:  
 Budds Farm WTW pumping station: 3.5m height.  
 Water recycling plant: 14.5m height.  
 Brake pressure tanks (BPT K): 3.5m height.  
 Intermediate pumping stations (IPS F, BPT/IPS E, IPS G): 8m height.  
 Limits of Deviation for Otterbourne INNS Treatment Plant: 8m height.  
 ZTV based on absolute heights (AOD) of permanent structures and proposed landform changes.

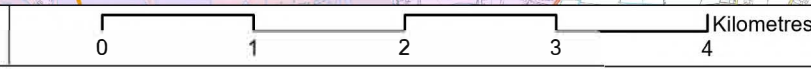
Coordinate system: British National Grid; Datum: OSGB 1936  
 Data sources: © Crown copyright and database rights 2026 Ordnance Survey 0100031673. Sources: Esri, TomTom, Garmin, FAO, NOAA, USGS, © OpenStreetMap contributors, and the GIS User Community © Environment Agency copyright and/or database right 2026. All rights reserved.

PROJECT TITLE  
**Hampshire Water Transfer and Water Recycling Project**

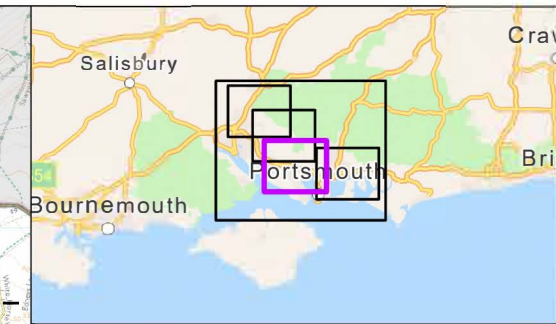
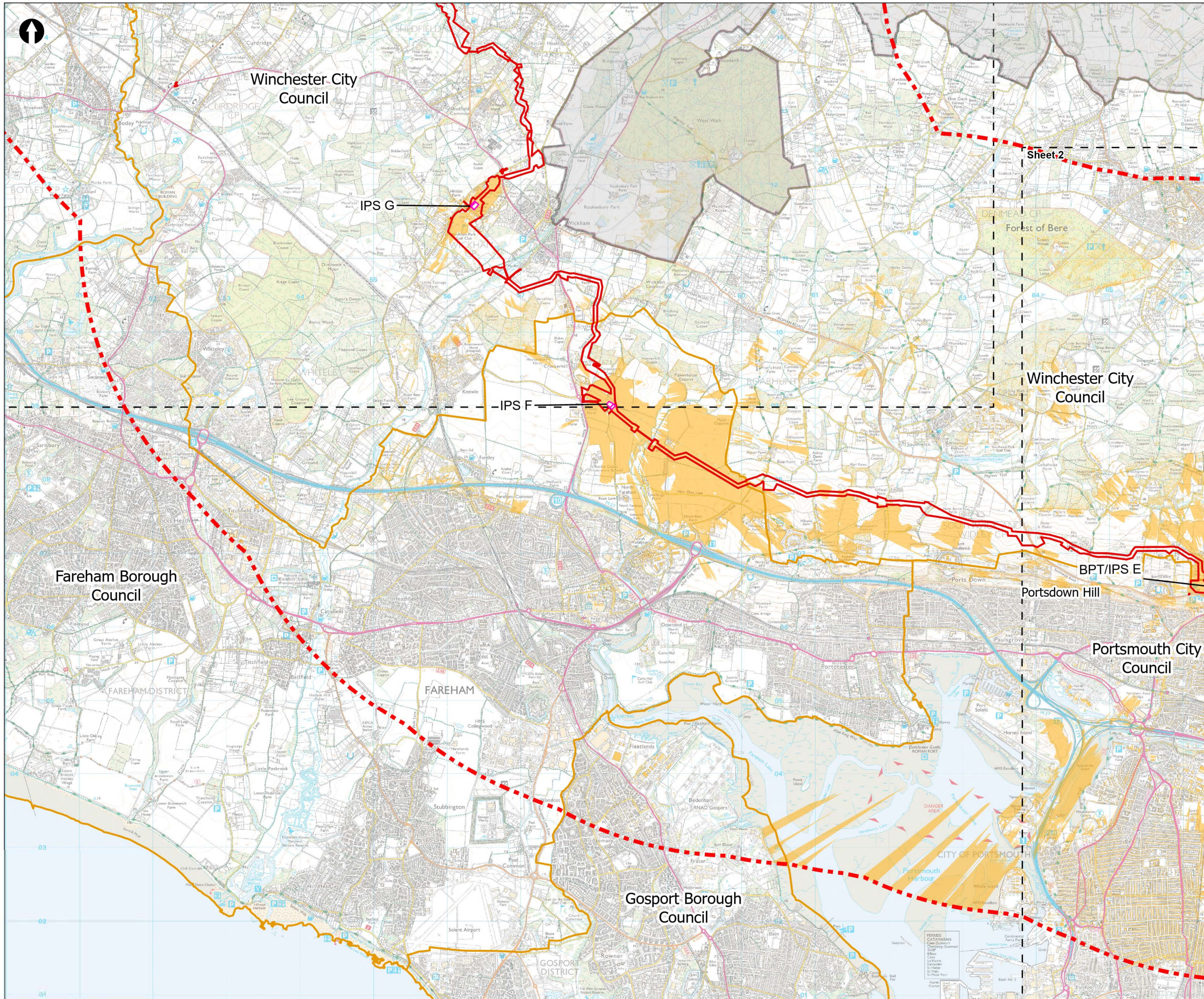


**Figure 13.21**  
 Zone of Theoretical Visibility (operation, with screening – Proposed Development differentiating Above Ground Plants)  
 Sheet 2 of 5

Drawn <b>DL</b>	GIS Checked <b>MW</b>	Checked <b>MP</b>	Approved <b>AK</b>
Scale at A3 <b>1:50,000</b>	Status <b>Final</b>	Revision <b>05</b>	Security <b>STD</b>



Drawing Number  
**PC5223-RHD-ES-ZZ-D-Z-0155**



- Order Limits
- Visual Study Area (5km)
- Sheet extent boxes 1:50k
- Local planning authorities
- South Downs National Park
- Zone of Theoretical Visibility: Operation with screening
- Above Ground Plant**
- Break Pressure Tank & Intermediate Pumping Station
- Intermediate Pumping Station

ZTV = Zone of Theoretical Visibility.  
DSM = Digital Surface Model.

ZTV produced with Lidar DSM.  
ZTV shows visibility, with screening, of permanent above ground structures only.  
Relative Heights:  
Budds Farm WTW pumping station: 3.5m height.  
Water recycling plant: 14.5m height.  
Brake pressure tanks (BPT K): 3.5m height.  
Intermediate pumping stations (IPS F, BPT/IPS E, IPS G): 8m height.  
Limits of Deviation for Otterbourne INNS Treatment Plant: 8m height.  
ZTV based on absolute heights (AOD) of permanent structures and proposed landform changes.

Coordinate system: British National Grid; Datum: OSGB 1936  
Data sources: © Crown copyright and database rights 2026 Ordnance Survey 0100031673. Sources: Esri, TomTom, Garmin, FAO, NOAA, USGS, © OpenStreetMap contributors, and the GIS User Community © Environment Agency copyright and/or database right 2026. All rights reserved.

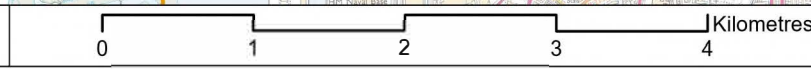
PROJECT TITLE  
Hampshire Water Transfer and Water Recycling Project

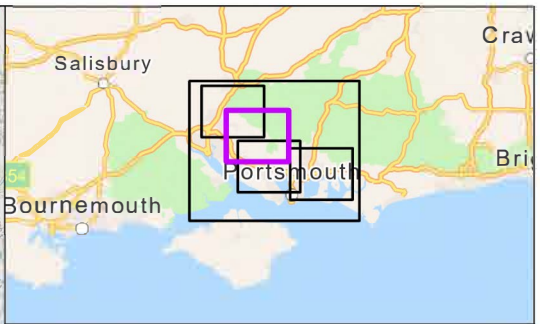
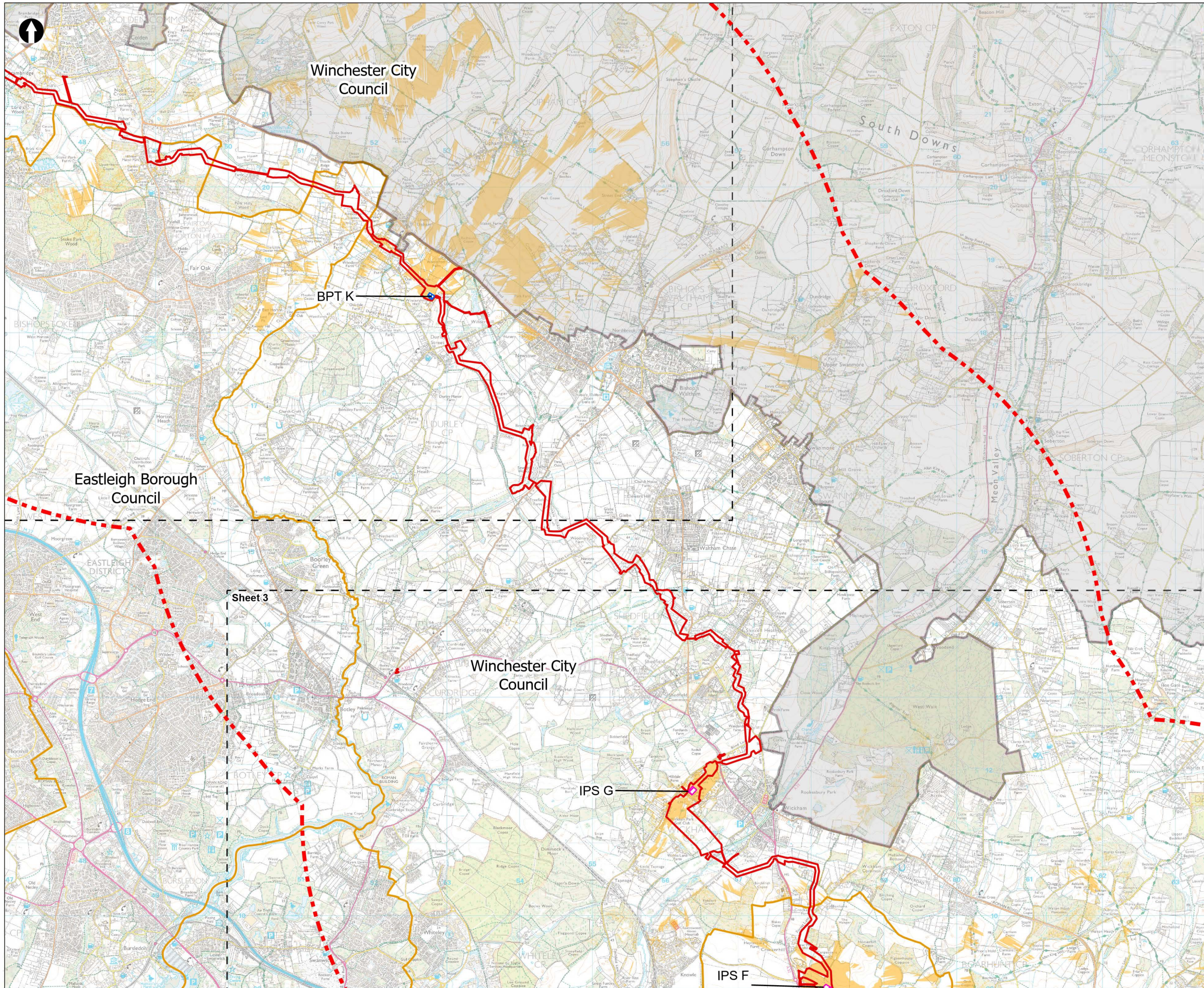


Figure 13.21  
Zone of Theoretical Visibility (operation, with screening – Proposed Development differentiating Above Ground Plants)  
Sheet 3 of 5

Drawn <b>DL</b>	GIS Checked <b>MW</b>	Checked <b>MP</b>	Approved <b>AK</b>
Scale at A3 <b>1:50,000</b>	Status <b>Final</b>	Revision <b>05</b>	Security <b>STD</b>

Drawing Number  
**PC5223-RHD-ES-ZZ-D-Z-0155**





- Order Limits
- Visual Study Area (5km)
- Sheet extent boxes 1:50k
- Local planning authorities
- South Downs National Park
- Zone of Theoretical Visibility: Operation with screening
- Above Ground Plant**
- Break Pressure Tank
- Intermediate Pumping Station

ZTV = Zone of Theoretical Visibility.  
 DSM = Digital Surface Model.

ZTV produced with Lidar DSM.  
 ZTV shows visibility with screening of permanent above ground structures only.  
 Relative Heights:  
 Budds Farm WTW pumping station: 3.5m height.  
 Water recycling plant: 14.5m height.  
 Brake pressure tanks (BPT K): 3.5m height.  
 Intermediate pumping stations (IPS F, BPT/IPS E, IPS G): 8m height.  
 Limits of Deviation for Otterbourne INNS Treatment Plant: 8m height.  
 ZTV based on absolute heights (AOD) of permanent structures and proposed landform changes.

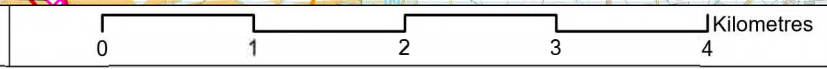
Coordinate system: British National Grid; Datum: OSGB 1936  
 Data sources: © Crown copyright and database rights 2026 Ordnance Survey 0100031673. Sources: Esri, TomTom, Garmin, FAO, NOAA, USGS, © OpenStreetMap contributors, and the GIS User Community © Environment Agency copyright and/or database right 2026. All rights reserved.

PROJECT TITLE  
 Hampshire Water Transfer and Water Recycling Project

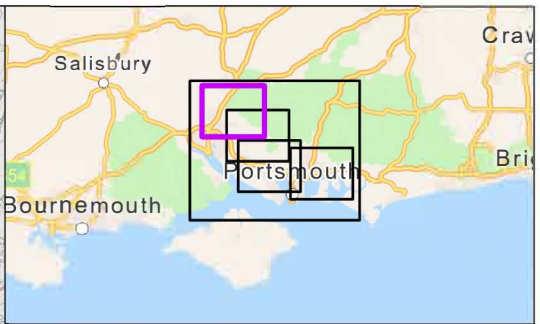
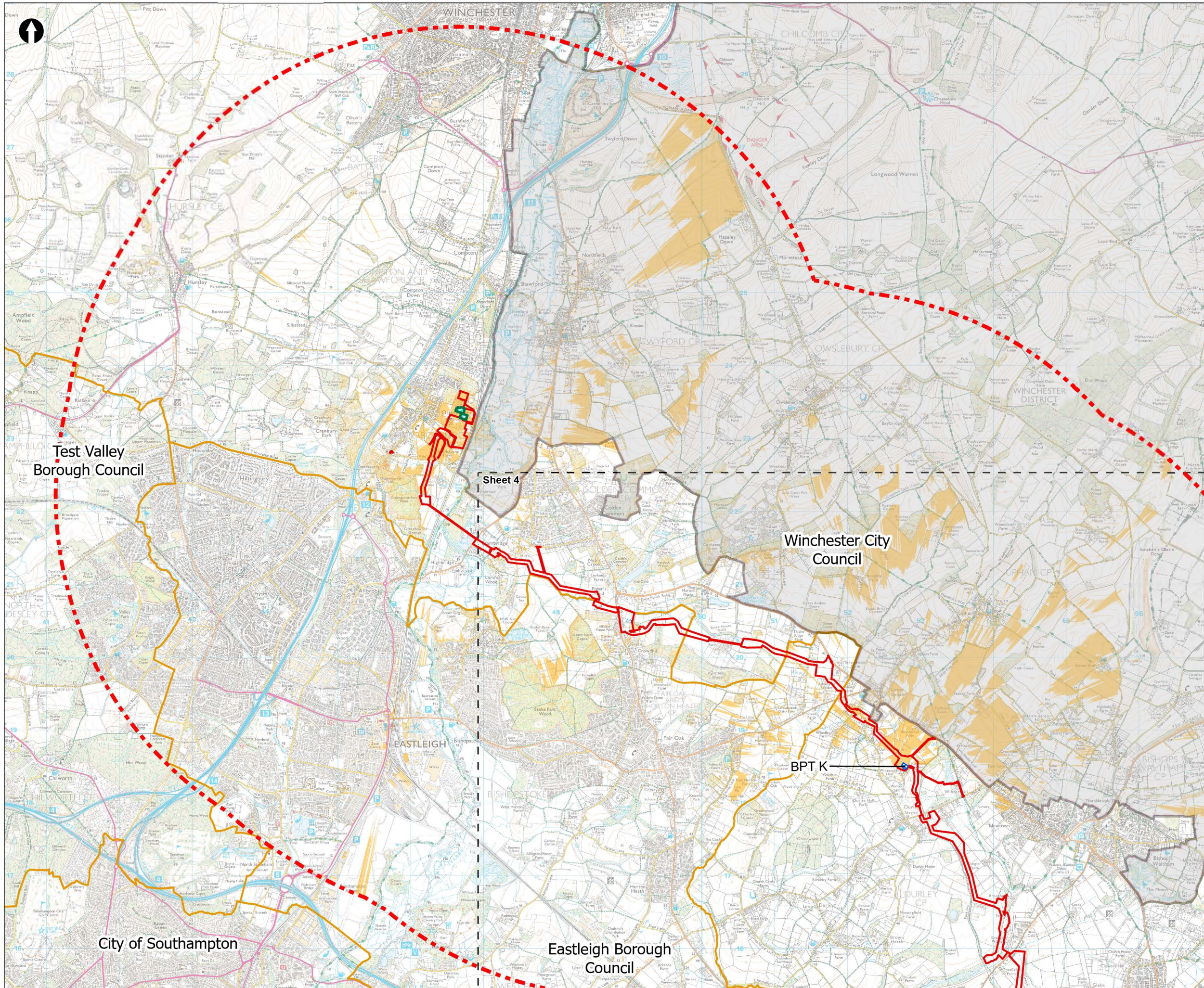


Figure 13.21  
 Zone of Theoretical Visibility (operation, with screening – Proposed Development differentiating Above Ground Plants)  
 Sheet 4 of 5

Drawn <b>DL</b>	GIS Checked <b>MW</b>	Checked <b>MP</b>	Approved <b>AK</b>
Scale at A3 <b>1:50,000</b>	Status <b>Final</b>	Revision <b>05</b>	Security <b>STD</b>



Drawing Number  
**PC5223-RHD-ES-ZZ-D-Z-0155**



- Order Limits
- Visual Study Area (5km)
- Sheet extent boxes 1:50k
- Local planning authorities
- Limits of Deviation for Otterbourne INNS Treatment Plant
- South Downs National Park
- Zone of Theoretical Visibility: Operation with screening
- Above Ground Plant**
- Break Pressure Tank

ZTV = Zone of Theoretical Visibility.  
 DSM = Digital Surface Model.

ZTV produced with Lidar DSM.  
 ZTV shows visibility, with screening, of permanent above ground structures only.  
 Relative Heights:  
 Budds Farm WTW pumping station: 3.5m height.  
 Water recycling plant: 14.5m height.  
 Brake pressure tanks (BPT K): 3.5m height.  
 Intermediate pumping stations (IPS F, BPT/IPS E, IPS G): 8m height.  
 Limits of Deviation for Otterbourne INNS Treatment Plant 8m height.  
 ZTV based on absolute heights (AOD) of permanent structures and proposed landform changes.

Coordinate system: British National Grid; Datum: OSGB 1936  
 Data sources: © Crown copyright and database rights 2026 Ordnance Survey 0100031673. Sources: Esri, TomTom, Garmin, FAO, NOAA, USGS, © OpenStreetMap contributors, and the GIS User Community © Environment Agency copyright and/or database right 2026. All rights reserved.

PROJECT TITLE  
 Hampshire Water Transfer and Water Recycling Project



Figure 13.21  
 Zone of Theoretical Visibility (operation, with screening – Proposed Development differentiating Above Ground Plants)  
 Sheet 5 of 5

Drawn <b>DL</b>	GIS Checked <b>MW</b>	Checked <b>MP</b>	Approved <b>AK</b>
Scale at A3 <b>1:50,000</b>	Status <b>Final</b>	Revision <b>05</b>	Security <b>STD</b>

